



# PLARAD<sup>®</sup>

Torque & Tension Systems

Products & Services

# Accessories for **MSX/MX-EC**

Standard square drive sockets are available in all dimensions and for all across flats sizes.



Long socket

Double hexagonal socket

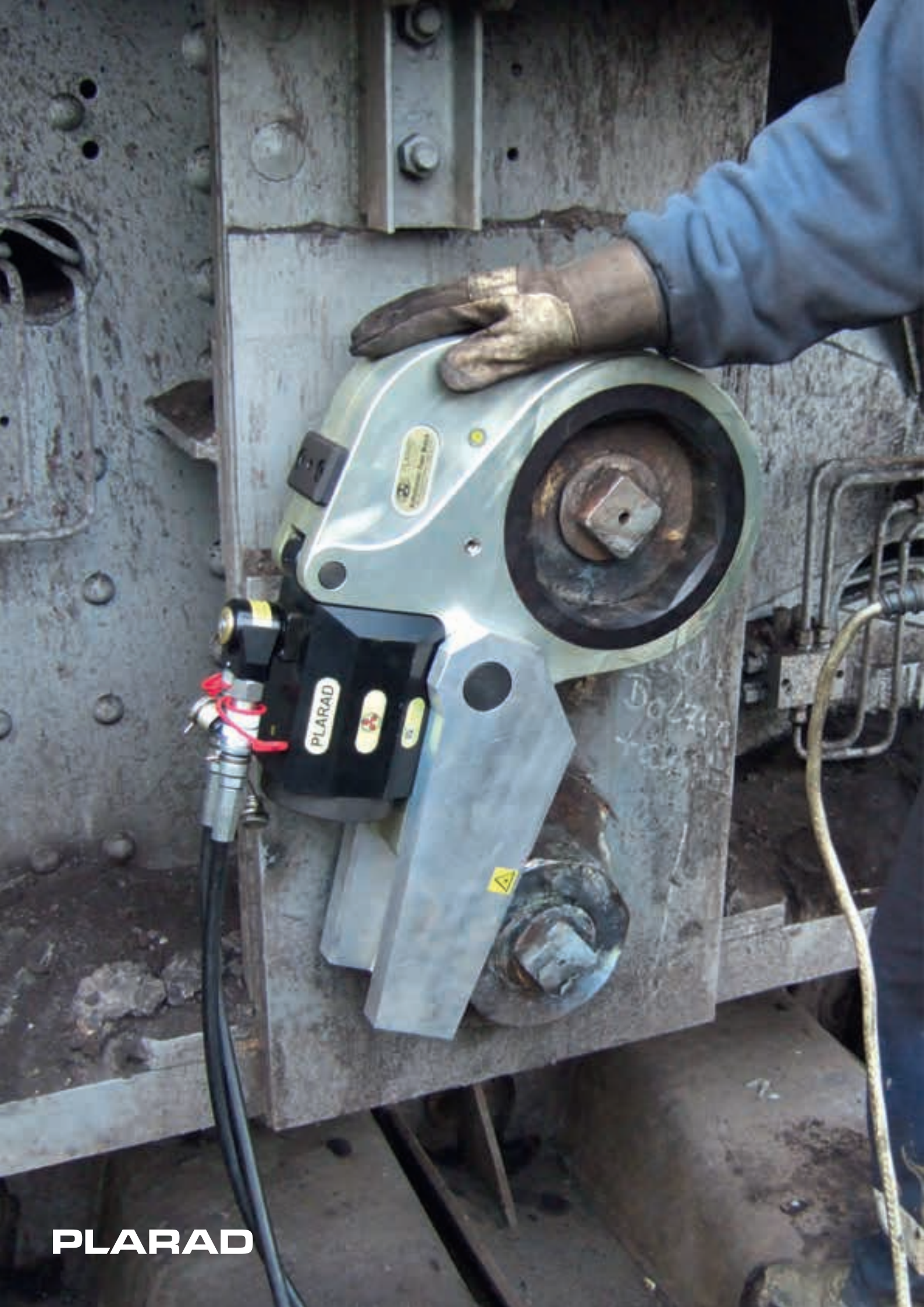
Reduction of height and weight through the use of one-piece splined safety sockets.



Splined safety hex inserts in a variety of sizes.







**PLARAD**

# Accessories for **FSX**

Interchangeable sockets in different sizes can be quickly changed.

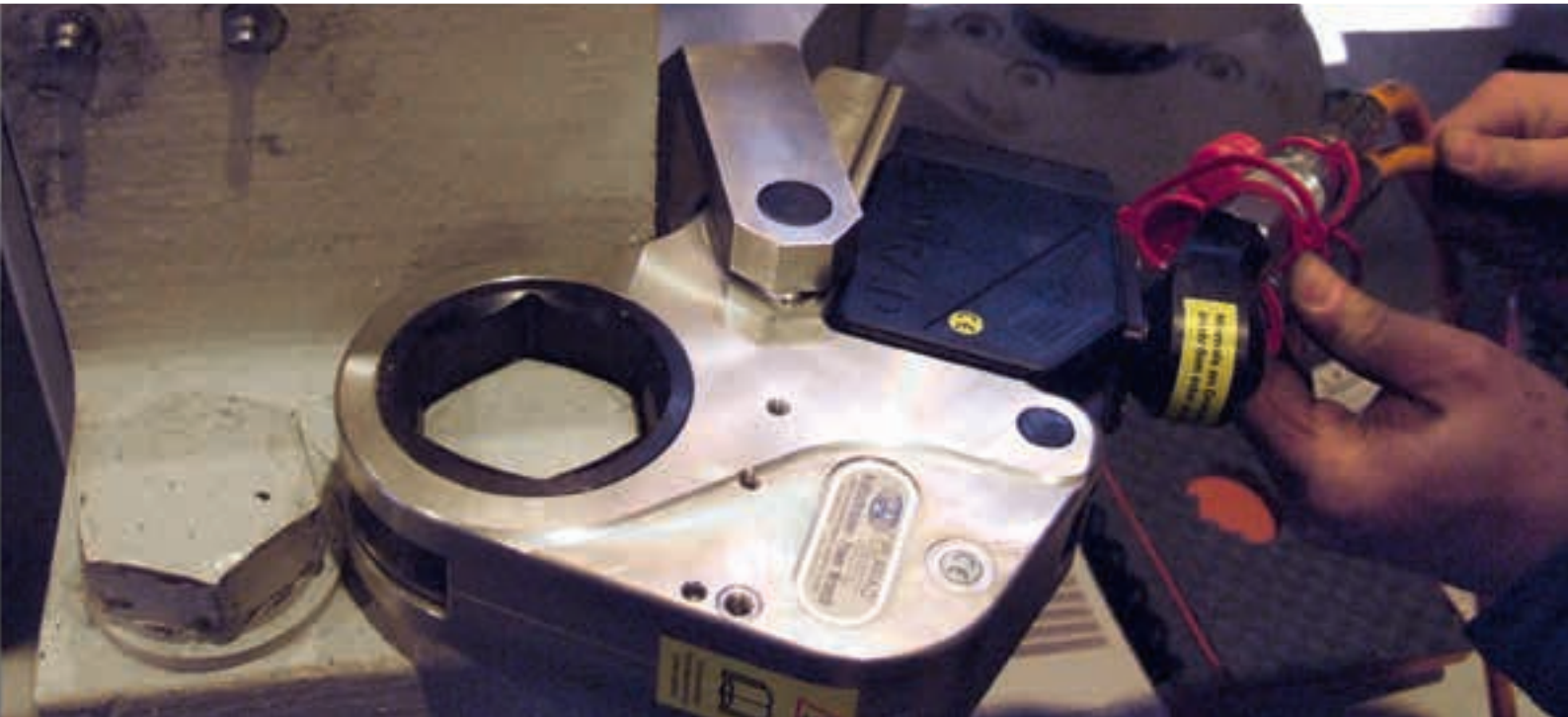


In/out sockets are available in all dimensions and for all wrench sizes.



In exceptional cases, bespoke reaction arms can be designed to match your particular application, ensuring safe and optimum use of the reaction arm against a surface.







PLARAD

# K-series

the universal tool for confined spaces



Socket fittings up to 150 mm, also available open and open-able versions



Ratchet heads (up to 105 mm) with exchangeable inserts



Type	Head sizes (mm)	Performance range (Nm)
<b>K 30 TF</b>	24 - 95	300 - 3 000
<b>K 60 TF</b>	24 - 95	660 - 6 600
<b>K 150 TF</b>	27 - 110	1 100 - 11 000
<b>K 200 TF</b>	60 - 135	2 000 - 20 000
<b>K 300 TF</b>	80 - 150	3 000 - 30 000







PLARAD  
333-2718  
EN857

EN857/EN857 25C

**PLARAD**

# HPR up to 150 000 Nm

- For tightening and loosening large, heavy bolted joints
- Optimised for use in confined spaces where conventional hydraulic wrenches do not fit
- The space required by a ring spanner is enough room for the HPR to operate



CTK 35 EFS  
Hydraulic Power Pack



Various ring spanner attachments and the ratchet heads can be changed quickly and easily.

Power unit	Performance range	Max. size, metric (AF)	Max. size, imperial (AF)	Weight
RE 500	5 000 to 50 000 Nm	185 mm	7 1/4"	34 kg
RE 1000	10 000 to 100 000 Nm	230 mm	9 1/8"	45 kg
RE 1500	15 000 to 150 000 Nm	320 mm	12"	76 kg



# General accessories

Trolley for hydraulic power packs – for mobility in plants and workshops

Aluminum frame, 2 integrated handles, lockable quick-lock, rollers with solid rubber tires and roller bearings, brake and caster wheels



Assortment of hoses and coupling adapters

Plarad hoses with a fourfold safety factor up to 800 bar (bursting pressure 3 200 bar)





Lubricants



Valve wheel driver for valves



Various reaction arms



Various sockets and fittings

# GMV 2 & PH

## torque measuring device

## Checking bolting joints

The microprocessor controlled GMV 2 unit is our key test instrument.

Used in conjunction with a transducer, it enables precision measurement of torque while bolts are being done up. The values can be saved, along with the date and time, and can then be printed out by the instrument itself or uploaded to a PC for further evaluation.



## Equipment testing

The PH test system, used with the GMV 2, is the ideal combination for testing and setting up hydraulic tools.

Combining the DRT reaction torque sensor with the GMV 2 enables static testing of impact tools, electric torque tools and other equipment of various designs.

PLARAD Torque & Tension Systems									
Test No.	Date	Time	Value	Unit	Operator	Location	Notes	Printed	Printed Date
1	10/10/00	10:00	100.0	Nm	John	Workshop			10/10/00
2	10/10/00	10:05	100.0	Nm	John	Workshop			10/10/00
3	10/10/00	10:10	100.0	Nm	John	Workshop			10/10/00
4	10/10/00	10:15	100.0	Nm	John	Workshop			10/10/00
5	10/10/00	10:20	100.0	Nm	John	Workshop			10/10/00
6	10/10/00	10:25	100.0	Nm	John	Workshop			10/10/00
7	10/10/00	10:30	100.0	Nm	John	Workshop			10/10/00
8	10/10/00	10:35	100.0	Nm	John	Workshop			10/10/00
9	10/10/00	10:40	100.0	Nm	John	Workshop			10/10/00
10	10/10/00	10:45	100.0	Nm	John	Workshop			10/10/00

Bolting joints can be evaluated on a PC



# TC1

## mobile measuring unit

The TC1 measuring unit is an innovation in the field of mobile measuring equipment. It measures the applied torque, and hence the bolting process, directly where it happens. The system works wirelessly in the bolting process and can simply be attached to the nutrunner.

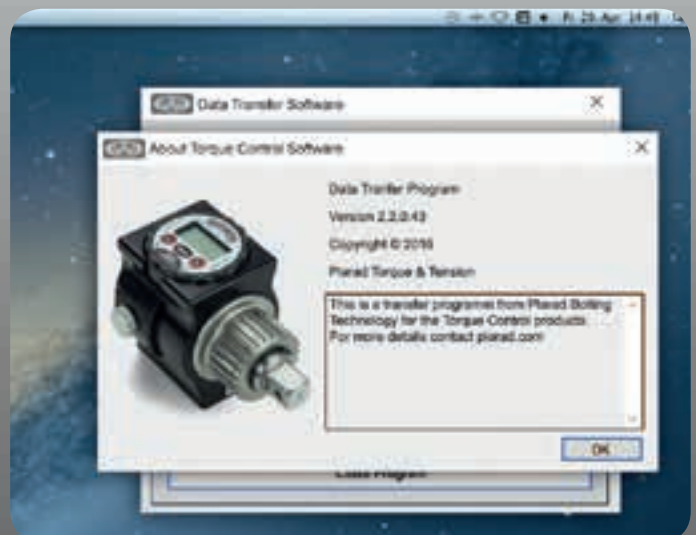
- Measures the applied torque directly at the point of application
- Measuring range up to 5 500 Nm
- Torque is shown in the sensor display
- Acoustic warning signal if the defined tolerance is exceeded
- An LED display provides information about the torque result
- Integrated memory for 250 values
- Transfer and analysis to the PC
- Appliances are compatible with the current Plarad nutrunner range and virtually maintenance-free
- Including transport box, Data-Trans software, power cable and USB cable



Type	Measurement range (Nm)	Square drive	Spline teeth quantity	Weight (kg)
<b>TC1 - 11</b>	110 - 1 100	3/4"	26	2.60
<b>TC1 - 31</b>	310 - 3 100	1"	45	4.70
<b>TC1 - 41</b>	410 - 4 100	1"	26	2.70
<b>TC1 - 55</b>	550 - 5 500	1 1/2"	45	5.00

## Torque Control Software

- Documentation from: Screw connection date, time, OK/NO OK result
- Storage of screw connection data
- Evaluation/statistics/archive
- Optimised documentation and process security
- Quality assurance guarantee



## Overseas subsidiary companies:

### China

PLARAD Bolting Technology (Beijing)  
Co., Ltd

Block D, Building No. 3, Yard No. 31  
Guangqu Road · Chaoyang District  
CN - Beijing 100022, P.R.C

Phone: +86 (0)10 872 160 01-0

Fax: +86 (0)10 872 160 02

E-mail: info-china@plarad.com

### Italy

Plarad Italy Srl

Via della Vecchia Chimica, 10  
20070 Cerro al Lambro (MI)

Phone: +39 02 983 29 54

Fax: +39 02 98 11 91 73

E-mail: italia@plarad.com

### Turkey

Plarad - Tork Anahtarları ve Gerdirme  
Sistemleri San. Dış. Tic. Ltd. Şti.

Tekstilkent Ticaret Merkezi  
A2 Blok, Kat: Giriş D: 22, Oruçreis  
Mah. Barbaros Cad.  
34220 Esenler, Istanbul

Phone: +90 (0)212 659 77 76

Fax: +90 (0)212 659 77 81

E-mail: plarad-tork@plarad.com

### UK

Plarad UK Ltd.

Parkside Business centre, Unit 4  
58/62 Walpole Road,  
Bromley, BR2 9SF, London

Phone: +44 (0) 845 643 69 78

Fax: +44 (0) 1294 44 30 60

Mobile: +44 (0) 777-153 30 78

E-mail: UK@plarad.com

**PLARAD**<sup>®</sup>  
Torque & Tension Systems



... a successful connection!

**Maschinenfabrik Wagner GmbH & Co. KG**  
Birrenbachshöhe · 53804 Much · Germany

**Phone national:** +49 (0)2245 62-0

**Fax national:** +49 (0)2245 62-66

**Phone international:** +49 (0)2245 62-10

**Fax international:** +49 (0)2245 62-22

info@plarad.de · www.plarad.de

